

4

3

2

1

THIS DRAWING IS UNPUBLISHED.

RELEASED FOR PUBLICATION

,19 .

© COPYRIGHT 19

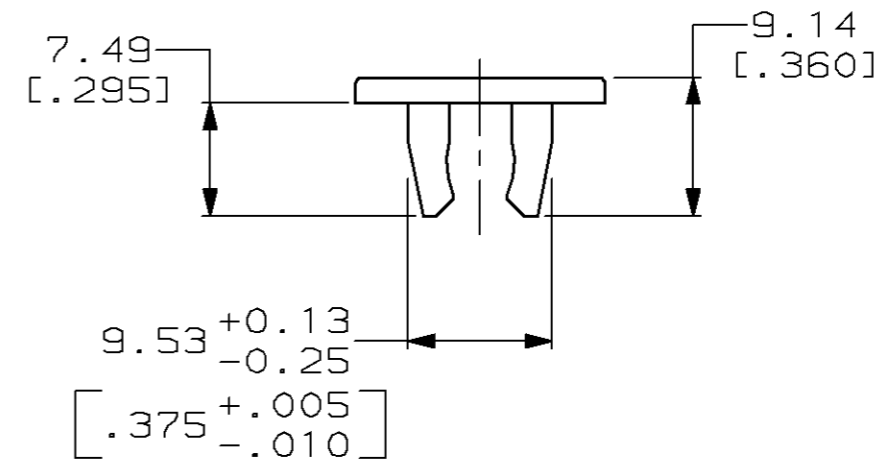
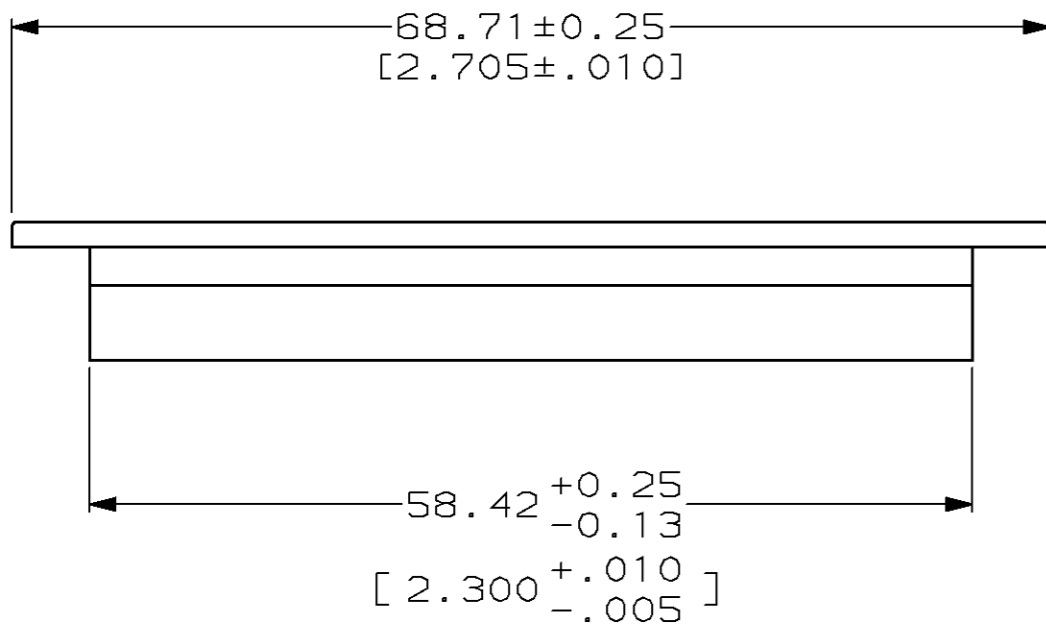
BY AMP INCORPORATED. ALL RIGHTS RESERVED.

LOC	DIST	REVISIONS			
P	LTR	DESCRIPTION	DATE	DWN	APVD
AA	20	A	REV; EC 0502-0123-96	19SEPT96	DS MH



1. MATERIAL: POLYETHYLENE MOLDING COMPOUND, BLUE.

2. THIS DRAWING RESTRICTED TO AT&T CO.



569334-1
PART NO.

THIS DRAWING IS A CONTROLLED DOCUMENT FOR AMP INCORPORATED. IT IS SUBJECT TO CHANGE AND THE CONTROLLING ENGINEERING ORGANIZATION SHOULD BE CONTACTED FOR THE LATEST REVISION.		DWN T. SPRINKLE 4-17-95	AMP AMP Incorporated Harrisburg, PA 17105-3608
DIMENSIONS: mm [INCHES]		CHK D. HUSSEY 5-9-95	
TOLERANCES UNLESS OTHERWISE SPECIFIED:		APVD M. HUGHES 9-12-95	NAME COVER, DUST, PLUG, 50 POSITION, CHAMP
0 PLC ±-		PRODUCT SPEC	SIZE A3
1 PLC ±-		APPLICATION SPEC	CAGE CODE 00779
2 PLC ±0.13 [0.005]		WEIGHT	DRAWING NO C-569334
3 PLC ±-		RESTRICTED CUSTOMER	SCALE 2:1
4 PLC ±-			SHEET 1 OF 1
ANGLES ±-			REV A
MATERIAL △	FINISH -		